

## Sabroe SMC 106 L mk2 package

### Specifications

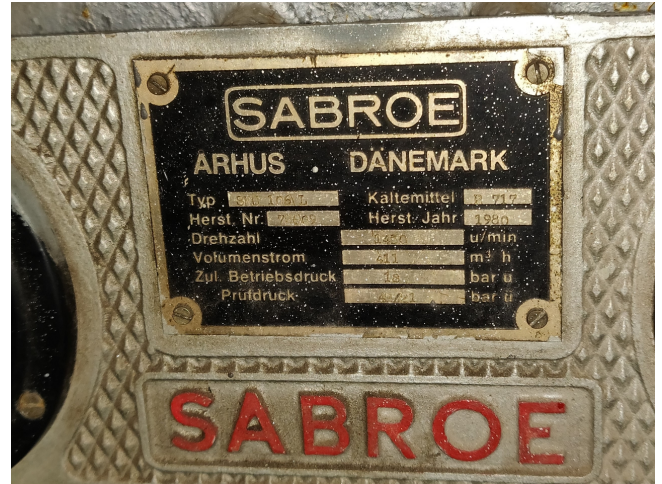
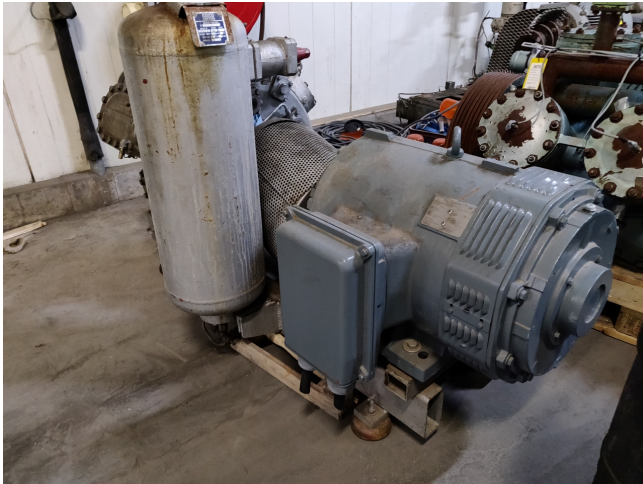
Brand	Sabroe
Type	SMC 106 L mk2 package
Refrigerant	NH 3 (ammonia)
kW at +10°C/+40°C	548.3
kW at 0°C/+40°C	2.6
kW at -5°C/+40°C	288.5
kW at -10°C/+40°C	225.5
Electromotor Specs	75 kW at 1470 RPM
m3 / h	411
Package / Rack	✓
Stock	1



### Description

#### Used Sabroe SMC 106 L mk2 package

Used Sabroe SMC 106L Ammonia NH3 reciprocating compressor with a 75 kW electromotor at 1470 RPM. Our capacity table is based on NH3. For all the other specs (if available), see the picture of the manufacturer model plate or the attached pdf file. \*Why choose for HOSBV? We're not only the largest used refrigeration specialist in Europe, but also, we deliver all equipment including an extensive test, warranty and industrial cleaning. \*Optional we can also perform a new paint job and arrange the logistics.



Model	Number of cylinders	Bore x stroke	Swept volume at 1800 rpm	Nominal capacities kW						Dimensions in mm Direct coupled unit			Weight excluding motor	Sound pressure level
				R717		R404A		R404A		L	W	H		
				Single/high stage	Booster	Single/high stage	Booster	Single/high stage	Booster					
		mm	m³/h	-20/-10°C	0/+10°C	-40/-10°C	0/+10°C	-20/-10°C	0/+10°C					dB(A)
SMC 104 S	4	100 x 80	371	129	209	35	205	112	2400-2800	1238	1303	800	80	
SMC 104 L	4	100 x 100	339	167	266	46	208	235	2400-2800	1238	1303	800	81	
SMC 104 E	4	100 x 120	339	206	324	57	N/A	N/A	2400-2800	1238	1303	800	81	
SMC 106 S	6	100 x 80	407	194	353	52	308	197	2400-2800	1390	1308	925	81	
SMC 106 L	6	100 x 100	505	251	398	70	332	202	2400-2800	1390	1308	925	82	
SMC 106 E	6	100 x 120	509	309	486	86	N/A	N/A	2400-2800	1390	1308	925	82	
SMC 108 S	8	100 x 80	543	259	437	70	410	263	2400-2800	1201	1303	990	82	
SMC 108 L	8	100 x 100	679	335	531	93	416	270	2400-2800	1201	1303	990	83	
SMC 108 E	8	100 x 120	679	412	648	115	N/A	N/A	2400-2800	1201	1303	990	83	
SMC 112 S	12	100 x 80	834	388	626	106	636	395	2425-3000	1290	1314	1660	83	
SMC 112 L	12	100 x 100	1018	502	796	140	634	405	2425-3000	1290	1314	1660	83	
SMC 112 E	12	100 x 120	1018	618	972	172	N/A	N/A	2425-3000	1290	1314	1660	83	
SMC 116 S	16	100 x 80	1086	517	834	141	821	526	2475-3200	1301	1314	1760	84	
SMC 116 L	16	100 x 100	1357	669	1062	187	821	539	2475-3200	1301	1314	1760	84	
SMC 116 E	16	100 x 120	1357	824	1297	230	N/A	N/A	2475-3200	1301	1314	1760	84	

Nominal capacities are based on 5°C subcooling and 1500 rpm.

SMC-E series: max. rpm 1500 for R717

PAGE 56/62 2022.11.11

Nominal capacities are based on 5°C subcooling and 1500 rpm.  
SMC-E series: max. rpm 1500 for R717